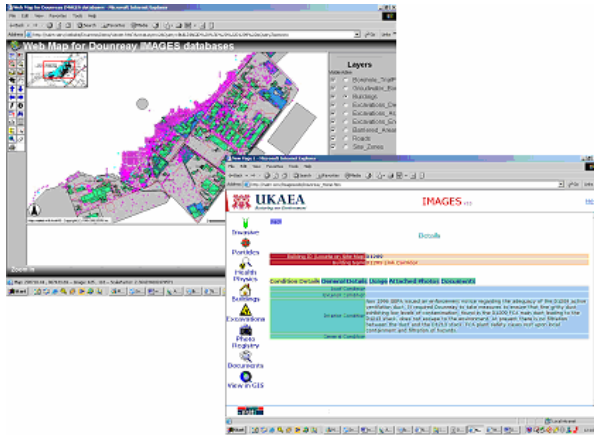


# IMAGESweb

## web-based searching and assessment of geographical data



### Web-based access to geographical data



The United Kingdom Atomic Energy Authority (UKAEA) has been using IMAGES (Information Management And Geographical Evaluation System) to assist with managing environmental monitoring data since 1999. IMAGES is based around ESIT's ADMiT System and was developed as a collaborative effort between UKAEA and ESIT Ltd.

In 2003, ESIT was commissioned to build a web-based application, IMAGESweb, which would provide an easy-to-use tool to enable data stored by the IMAGES system to be accessed via the UKAEA Intranet.

### the new system

The IMAGESweb application was configured using ESIT's standard webMiT software to provide a web portal to the IMAGES database. IMAGESweb integrates with ESRI's ArcIMS software to provide spatial searching and analysis of the data in a map-based user interface.

The IMAGESweb application uses individual login accounts to ensure that only authorised staff are provided with access to the data.

IMAGESweb is a modular web application. The module topic areas include:

- Ground investigation data
- Groundwater quality monitoring data
- Health physics survey data
- Land quality assessment data
- Buildings information data
- Photographic register

### FAST FACTS

- case study: UKAEA
- location: UKAEA's Dounreay and Harwell sites
- users: All authorised UKAEA staff
- database: Oracle 9i
- integration: ESRI's ArcIMS



- Document register
- Data file register
- Excavation register

IMAGESweb provides all the standard webMiT tools, including:

- Powerful searching and filtering capabilities
- Integration between web application modules
- Reporting tools

The web-mapping interface, configured using ESRI's ArcIMS software, allows the user to view the location-based environmental monitoring data on an interactive map. The integration with ArcIMS provides the following powerful functionality:

- Users can perform spatial selection of data using the map-based interface and view the results in IMAGESweb pages
- Users can search/filter for data using IMAGESweb and view the search results on the map interface.

### the benefits

IMAGESweb enables all authorised UKAEA staff to access the extensive range of data held in the IMAGES database using a standard web browser. The interfaces are easy to use and do not require specialist software training.

### case study: IMAGESweb